



POLYFLOR™
COVERING THE WORLD



Experts in Dementia Care Flooring

Specialist Care



Polyflor employees undertake Dementia Friends information sessions facilitated by Natalie Yates-Bolton from the University of Salford

POLYFLOR'S COMMITMENT TO THE DEMENTIA CARE SECTOR



The care sector continues to be an area where dementia-friendly interior design can have a real impact on health and wellbeing, helping to promote a more positive environment for people living at home or within an assisted living facility.

With more than 850,000 people currently living with dementia in the UK (Alzheimer's Society, 2015) and the rate of diagnosis rising, our building design of tomorrow needs to be future proofed to account for this increase and generate surroundings that promote inclusive design requirements, contributing to an improved quality of life for those living with dementia. Along with appropriate lighting and signage to aid navigation, the floor

and walls are integral components of the interior space that can provide a homely, welcoming and non-institutional feel for those living and working within the residential care setting.

We can all contribute towards making a positive difference for those affected by dementia - the person themselves, their family, friends and carers. Polyflor is pleased to have worked with the School of the Built Environment at the University of Salford to develop their key principles for dementia-friendly flooring that meet the general guidelines set down in the 2015 Health Building Note issued by the Department of Health. Discussion has also taken place with the Salford Institute for Dementia Associates, an independent group of carers and individuals living with

dementia, who are able to evaluate and confirm support of the flooring principles that have been created. This will also feed into Polyflor's new product development activity with the Dementia Associates being consulted on future new products prior to launch to understand their needs and expectations. Polyflor has a number of ranges suitable to be used within dementia-led environments that meet the key principles laid out in this brochure, demonstrating our commitment to offering relevant flooring guidance to specifiers working on projects around the world.

Polyflor continues to have significant involvement in many areas of the healthcare sector and our link with the University of Salford extends further with our partner status of their International Dementia Design Network, which seeks to provide a forum for collaboration in global dementia design research, innovation and education, representing those organisations wanting to make a positive difference to the quality of life for those living with dementia.

Polyflor is a local member of the Dementia Action Alliance, which is committed to transforming the lives of people with dementia and their carers. As part of the company's dedication in working to become more dementia-friendly, an action plan is in place with specific detailed objectives to demonstrate commitment to the cause and raise awareness of dementia with our workforce. This has been shown by company employees undertaking the Dementia Friends information sessions, an Alzheimer's Society supported initiative designed to give staff more understanding of dementia and the things that could make a difference to people living with the condition in their communities.

Polyflor's research into dementia-friendly flooring and development of products suited to the healthcare sector has been recognised by our invitation to join the Society of British and International Design (SBID) Healthcare Design Advisory Council. This is a collaboration of designers, educators, healthcare and industry professionals looking at how healthcare design can be used to meet the needs and make a real difference to the lives of our growing ageing community. Flooring is a known factor that can contribute to intelligent and carefully planned healthcare design, with medical experts now recognising the importance of the interior as part of the healing process (SBID, 2015).

Take a look at the key principles for flooring design considerations over the following pages and delve into some examples of where Polyflor flooring has been used within dementia-led spaces.

DEMENTIA-FRIENDLY FLOORING CHECKLIST

- ✓ Develop continuous flooring surface
- ✓ Tonal contrast
- ✓ Reduce impact sound
- ✓ Accentuate colours
- ✓ Avoid sensory overload
- ✓ Reduce sparkle
- ✓ Matt floor finish
- ✓ Blend flecks
- ✓ Avoid smells & odours
- ✓ Provide smooth transitions



PROFESSOR MARCUS ORMEROD INTRODUCES INCLUSIVE DESIGN FLOORING PRINCIPLES

I am pleased to have worked with Polyflor in the production of key principles for dementia-friendly flooring. This working collaboration is further strengthened with Polyflor being both a local manufacturing company and large employer in the area who understands the importance of its clients choosing the most suitable products within a care setting.

Flooring as well as other interior aspects, such as lighting and signage, is a key surface finish that can help promote a more positive and inclusive environment to those living with dementia and encourage reduced stress and anxiety levels. Generating this harmonious feel is equally important whether in a residential care setting or within a person's home to support independent living.

Polyflor understands the importance of its clients choosing the most suitable products within a care setting.

As a member of the Stakeholder Panel for the Health Building Note (HBN) 08-02 - 'Dementia-friendly Health and Social Care Environments' published by the Department of Health in 2015, our devised principles correspond to the guideline principles detailed within the HBN document. Additionally, the Salford Institute for Dementia Associates, a community group made up of both carers and individuals living with dementia have been involved in the development of the principles.

Professor Marcus Ormerod is Director of the SURFACE Inclusive Design Research Centre at the University of Salford's School of the Built Environment in the UK. Marcus is also built environment lead for the Salford Institute for Dementia and member of the DoH HBN 08-02 (2015) Stakeholder Panel.



Over the following pages, Professor Marcus Ormerod gives an introduction to dementia and explains how design can be implemented to support living well with the condition. He outlines the key principles for dementia-friendly flooring within the context of inclusive design for a person living in a range of settings, including at home and in residential care.

“Flooring can help promote a more positive and inclusive environment to those living with dementia and encourage reduced stress and anxiety”

- Professor Marcus Ormerod, University of Salford







WHAT IS DEMENTIA?

THERE IS A COMMON MISCONCEPTION THAT DEMENTIA IS A NORMAL PART OF AGEING AND THAT IT IS ALL ABOUT LOSS OF MEMORY - NOT SO!

Dementia is the umbrella term describing the symptoms that occur when the brain is affected by certain diseases or conditions. There are many different types of dementia, in fact over 100, although some are more common than others such as alzheimers, vascular, lewy body and frontotemporal dementias. Dementia involves the ongoing and irreversible death of brain cells, as such it is not a normal part of ageing and it is a terminal illness which gradually gets worse. The condition often affects memory, language, understanding, thinking and the ability for daily activities to be carried out.

The number of people living with dementia worldwide is currently estimated at 47.5 million and is projected to increase to 75.6 million by 2030 and more than triple by 2050 (WHO, 2015). In the UK, about 850,000 people have a diagnosis of dementia (Alzheimer's Society, 2015), although many remain undiagnosed. We know that about 1 in 14 people aged over 65 will have dementia and that this figure increases significantly with age, so we are much more likely to have dementia when we are 85, rather than when we are 65, although about 40,000 people under the age of 65 have early onset dementia (Alzheimer's Society, 2014). It is likely that we will have a close relationship to someone with dementia because it is estimated that 1 in 3 of us will have family, or friends, with the condition, so the impact of dementia goes much further than the person with the diagnosis.

There is also a strong link with dementia and the development of reduced vision. 1 in 3 people with dementia will have significant sight loss, with large proportions of the rest having deteriorating vision through normal ageing, with the number of people living with sight loss set to double over the next 25 years (RNIB Cymru, 2015). Someone who has a combination of both dementia and sight loss may experience reduced visual functioning, or perception, due to the neurological changes that are going on in the brain. This can lead to issues with depth and colour perception, heightened glare sensitivity and loss of visual acuity. This can have a "further negative effect on daily living, mobility, wellbeing and communication, leading to profound disorientation and isolation" (RNIB and Thomas Pocklington Trust, 2009).

The goal is to be able to 'live well with dementia' such that quality of life is maintained and even improved for the person with dementia but also for their family, friends and carers. All too often, dementia is seen as leading to inactivity and immobility coupled with loss of both independence and social interaction, yet good care, complemented with good design of the physical environment can make an important and critical contribution towards living well with the condition.

Implementing dementia friendly environments will be beneficial in the longer term, ensuring flexibility in design and prolonging the life cycle of a building. By providing dementia-friendly places and spaces through good design there is real opportunity to make a significant difference.

References

- Alzheimer's Society (2015) *Dementia UK: Update. Second Edition*. London, Alzheimers Society.
- Alzheimer's Society (2014) *Dementia UK: Second Edition*. London, Alzheimers Society.
- BS 8300 (2009) +A1 (2010) *Design of buildings and their approaches to meet the needs of disabled people - Code of practice*. London, British Standards Institute.
- Department of Health (2015) *Health Building Note 08-02 - General design guidance for healthcare buildings - Dementia-friendly Health & Social Care Environments*. London, Department of Health.
- Alzheimer's Society (2007) *Dementia UK: First Edition*. London, Alzheimers Society.
- RNIB Cymru (2015) *Homes for people with dementia and sight loss - a guide to designing and providing a safe and accessible environment*. Wales, RNIB Cymru.
- World Health Organisation (2015) *Dementia: Fact Sheet No 362*. Geneva, World Health Organisation.
- Equality Act (2010) London, The Stationery Office.
- RNIB and Thomas Pocklington Trust (2009) *Double trouble: dementia and sight loss*. Wales.





DESIGN TO SUPPORT LIVING WELL WITH DEMENTIA

We are all unique and a person with dementia is no different. There is no standard journey with dementia, so the challenge in the design of the physical environment is to avoid a 'one size fits all' approach. Some of the more common symptoms that a person with dementia may experience are:

- Cognitive - memory, judgement, insight, planning, reasoning and empathy may be affected;
- Functional - ability to undertake the instrumental activities of daily living decreases;
- Psychiatric - hallucinations (visual, smell, hearing) and delusions;
- Behavioural and psychological - inappropriate behaviour (e.g. spitting, swearing), agitation, aggression, wandering;
- Physical - difficulties with continence, swallowing, eating and mobility

We need to remember that a person with dementia may have other health conditions as a normal part of ageing, such as arthritis, heart disease, hearing loss, glaucoma, frailty, sight loss etc, so it is critical to design for the 'whole' person and not just design for the symptoms of dementia. A report has found that 72% of people with dementia will have another medical condition or disability (Alzheimer's Society, 2014). This is where taking an inclusive design approach to meet the requirements of the Equality Act (2010) is important. As

will be shown in the following dementia-friendly principles, flooring which is non-reflective and suitably contrasted to walls, furniture and sanitaryware can make a positive contribution to living well with dementia, closely aligned with suitable lighting, wayfinding and appropriate acoustics.

Similarly, in assessing the needs of the 'whole' person particularly within the care environment, current building design should plan for the fact that the number of people living with dementia will increase significantly because people are living longer. We know that over the last twenty years the profile of people in care homes has significantly changed. Up to 70% of care home residents in the UK have dementia or significant memory problems (Alzheimer's Society, 2014) so designing a space that is dementia-friendly for these people to live in is crucial. This is equally true for those with dementia who are living independently at home either within the context of their own home, or within supported schemes such as sheltered housing and extra care housing. Indeed, two thirds of people with dementia live in the community, with one third living in care homes (Alzheimer's Society, 2007). Implementing dementia-friendly environments will be beneficial in the longer term, ensuring flexibility in design and prolonging the life cycle of a building. By providing dementia-friendly places and spaces through good design there is real opportunity to make a significant difference.



DESIGN PRINCIPLES FOR DEMENTIA-FRIENDLY FLOORING

Dementia-friendly flooring is appropriate for a range of diverse settings including our own home, sheltered/extra care housing, dementia hubs and respite care, day centres, hospital/hospice environments, rehabilitation and intermediate care facilities as well as residential care/nursing home environments.

As such, the Salford Institute for Dementia at the University of Salford, in conjunction with Polyflor Ltd has developed the principles overleaf to support the implementation of the Department of Health HBN 08-02 (2015), the British Standard PAS 1365: 2015 and the British Standard 8300 (2009) + A1 (2010). The newly developed principles cross reference back to these documents where appropriate. These principles are aimed at designers and specifiers of flooring to assist with the implementation of dementia-friendly environments. The images presented are examples of good practice where Polyflor flooring has been installed.

SALFORD INSTITUTE FOR DEMENTIA ASSOCIATES

The following dementia-friendly flooring principles have been discussed and agreed with the Dementia Associates, a group of people who are living with or caring for someone with dementia. The Dementia Associates are an integral part of the Salford Institute for Dementia where they regularly meet to discuss activities or initiatives to support those living with the condition. This not only provides a social, interactive focal point for the Associates but also allows the Institute to engage and consult with them, using their feedback to drive research and education initiatives that are undertaken to the wider dementia community. This ensures that the work undertaken by the Institute reflects the issues and challenges faced by people affected by dementia in their daily lives.

For more information on designing for dementia spaces take a look at DH HBN 08-02 (2015) ▶



DH HBN 08-02 (2015) Design Principles for a Dementia-friendly Environment

See University of Salford and Polyflor's newly devised principles overleaf which reference back to these overarching principles

Principle 1	Provide a safe environment (the overarching principle)
Principle 2	Provide optimum levels of stimulation
Principle 3	Provide optimum lighting and contrast
Principle 4	Provide a non-institutional scale and environment
Principle 5	Support orientation
Principle 6	Support way-finding and navigation
Principle 7	Provide access to nature and the outdoors
Principle 8	Promote engagement with friends, relatives and staff
Principle 9	Provide good visibility and visual access
Principle 10	Promote privacy, dignity and independence
Principle 11	Promote physical and meaningful activities
Principle 12	Support diet, nutrition and hydration

10 PRINCIPLES FOR DEMENTIA-FRIENDLY FLOORING



1: Develop one continuous flooring surface

Tonal contrast of flooring is important and is more than just the colour (hue) of the product. Ideally, the floor needs to be both seen and experienced as one continuous surface. Choosing flooring products in adjacent areas with similar tones and light reflectance values (LRV) that are close to each other is therefore important. A large tonal contrast between two adjacent floor surfaces could be perceived as a step and cause confusion for those living with dementia. Threshold strips between two floor surfaces should match the tones of both surfaces. Similarly, barrier matting should blend tonally with adjacent flooring.

[Meets Design Principles 1, 3, 4, 5, 6 and 9 in DH HBN 08-02]

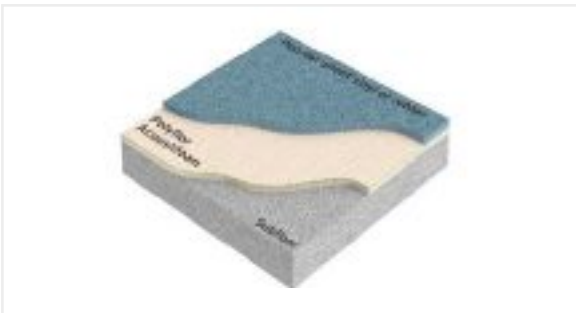


2: Careful use of tonal contrast

If there are changes in flooring between areas used by people with dementia and those that are staff only areas, a large tonal contrast may be beneficial in providing a visual barrier. Similarly, the flooring can be used to highlight main features of a room by having a good tonal contrast with walls and skirting, fixed and loose furniture and sanitaryware. As a rule of thumb, the light reflectance value (LRV) should be 30 points difference between surfaces in order to get good tonal contrast (BS 8300 S 9.1.1).

Additionally, being consistent in the use of materials, finishes and colours to differentiate room and space function is an important consideration.

[Meets Design Principles 1, 3, 4, 5, 6 and 9 in DH HBN 08-02]



3: Reduce impact sound

The acoustics of environments used by people with dementia should strike a careful balance between the environment being over stimulating with unwanted noise and being too sound absorbent that the space is monotonous. Choosing flooring products with acoustic absorption properties can help soften hard and noisy environments and reduce impact sound levels between rooms.

[Meets Design Principles 2 and 4 in DH HBN 08-02]



4: Accentuate colours to give depth

Using strong hues / colours will give more depth to a room than paler shades and this can help in the perception of the size and shape of rooms to aid wayfinding. People with dementia can find that rooms appear two dimensional if the colours are subdued, particularly if their vision is compromised. Avoid very dark colours as these may be perceived by the person with dementia as holes to fall into, or the dark colours may trigger emotions of imprisonment.

[Meets Design Principles 2, 4, 6 and 9 DH HBN 08-02]



5: Avoid sensory overload and false steps

Using flooring products without too many differing colours and patterns in the design or textures on the floor is important. Similarly, avoid inlaid logos and bands, as well as strong and contrasting grout lines in the flooring finish. Flooring which contributes to sensory overload can confuse the eye and cause a person with dementia to perceive a false step, an obstacle, a hole, or to see the pattern as something it is not (for example, blue swirls as a pattern in a floor may be interpreted as water). This can deter people with dementia from walking across the floor safely without getting distracted, causing disorientation and putting them off balance.

[Meets Design Principles 1, 3 and 9 in DH HBN 08-02]



6: Reduce sparkle

Using flooring products without any sparkle or shimmer effect in their design is important as these may be perceived by a person with dementia as being a wet floor surface, which can affect their gait and provide a slip risk.

[Meets Design Principles 1 and 3 in DH HBN 08-02]



7: Promote the use of a matt floor finish

A matt appearance to flooring, rather than shiny, will reduce problems of glare, or creating pools of reflected light from the overhead light fittings. Glossy surfaces may be perceived by a person with dementia as slippery or wet and this can lead to confusion and anxiety.

[Meets Design Principles 1 and 3 in DH HBN 08-02]



8: Blend flecks with the tone of the main floor surface

Where speckles or secondary flecks are being used in the floor material then avoid those with a high tonal contrast between the secondary flecks and the main floor tone. People with dementia may interpret the flecks as pieces on the floor surface and try to pick them up to throw away. Solid colour, or flooring with subtle tonal secondary flecks is preferable.

[Meets Design Principles 1 and 2 in DH HBN 08-02]



9: Avoid unpleasant smells and odours

Consideration should be given to smells that might build up through the spillage of foods/liquids and incontinence onto floor surfaces. People with dementia may have a strong emotional reaction to particular smells and odours which can lead to confusion and stress. Choosing the right flooring product along with an appropriate cleaning regime is important. Products provided with built-in maintenance enhancements to facilitate easier cleaning are preferable.

[Meets Design Principles 1, 2 and 4 in DH HBN 08-02]



10: Provide good transition between differing floor finishes

Sudden changes of flooring material type, low to high friction or soft to hard, may cause confusion for people with dementia and may present a fall hazard. Transition between differing flooring should be as smooth as possible and pronounced changes in surface finish should be avoided. Where flooring with a raised emboss is used, ensure that its use is limited to areas where additional safety flooring is required, such as wet rooms and barefoot areas.

[Meets Design Principles 1, 7 and 11 in DH HBN 08-02]





CASE STUDIES

OVER THE FOLLOWING PAGES ARE JUST A SELECTION OF INSTALLATIONS WHERE POLYFLOR FLOORING HAS BEEN SPECIFIED AND INSTALLED AS PART OF A DEMENTIA CARE FACILITY.

With an array of product choice and depth of stock availability, Polyflor is the chosen destination for many in the specification chain who are working on specialist care developments, whether new build or refurbishment.

Along with appropriate lighting and signage, dementia-friendly flooring is increasingly important to specifiers and Polyflor can service demand with a variety of design options from different product families. This depth of product choice covers all performance and aesthetic requirements across many use areas within commercial or residential settings.

HALLMARK CARE HOMES


Polyflor's stylish and high design flooring has formed a major part of some of Hallmark Care Homes' stunning portfolio of residential care properties across the UK. Used extensively to develop dementia-friendly spaces at flagship homes in Warwickshire, Suffolk and East Sussex, over 1000m² of Polyflor flooring was installed in each home to provide stimulating and safe environments for residents to live and socialise in.

Over 1000m² of Polyflor flooring was installed in each home to provide stimulating and safe environments for residents to live and socialise in.

Using a number of dementia-friendly flooring options, the chosen designs helped to promote a calm and comfortable environment, developing a space to feel like home. Vinyl flooring was installed across multiple floors into a number of resident areas such as cafés, relaxing therapy rooms, hair salons, cinema spaces as well as in bedrooms & en-suites. Meeting different demands across various use areas, colours from Expona Commercial PUR, Expona Control PUR and Camaro PUR ranges amongst others helped create a relaxed yet inviting feel due to the highly authentic representations of natural materials such as wood and stone.

The most recent Hallmark Care Home to open its doors was Anya Court in Rugby, Warwickshire, a modern care interior offering a warm and welcoming atmosphere. Providing dedicated nursing, residential and dementia care for up to 70 residents at their state of the art facilities, Polyflor is installed throughout three floors. The interior design of the home is focused around encouraging active and independent living that creates a specialist dementia community where residents will feel at ease in their own surroundings. The creation of this uplifting environment ensured that the impressive Anya Court building took home the prize for Best New Care Home at the 2015 Pinders Healthcare Design Awards.





"We are continually impressed with the array of dementia-friendly flooring ranges available from Polyflor which means we can use their products throughout our homes to add to the positive ambience"

- Jacqueline Farguson, Design Manager at Hallmark Care Homes



Jacqueline Farguson, Design Manager at Hallmark Care Homes, designed all the environments where Polyflor flooring was specified. Jacqueline commented:

"It was important for each care home design to avoid the clinical, institutionalised look of old and embrace the needs of our specific dementia communities. The flooring was integral in providing a homely environment that would encourage residents to live comfortably with reduced agitation levels. We found it easy to select Polyflor products that suited various use area requirements within each home. Not only do Polyflor products perform and clean well, they look great too and help form an attractive canvas onto which a complementary design space can be built, creating a welcoming environment for all residents, our care teams and visitors."



Woodland Café

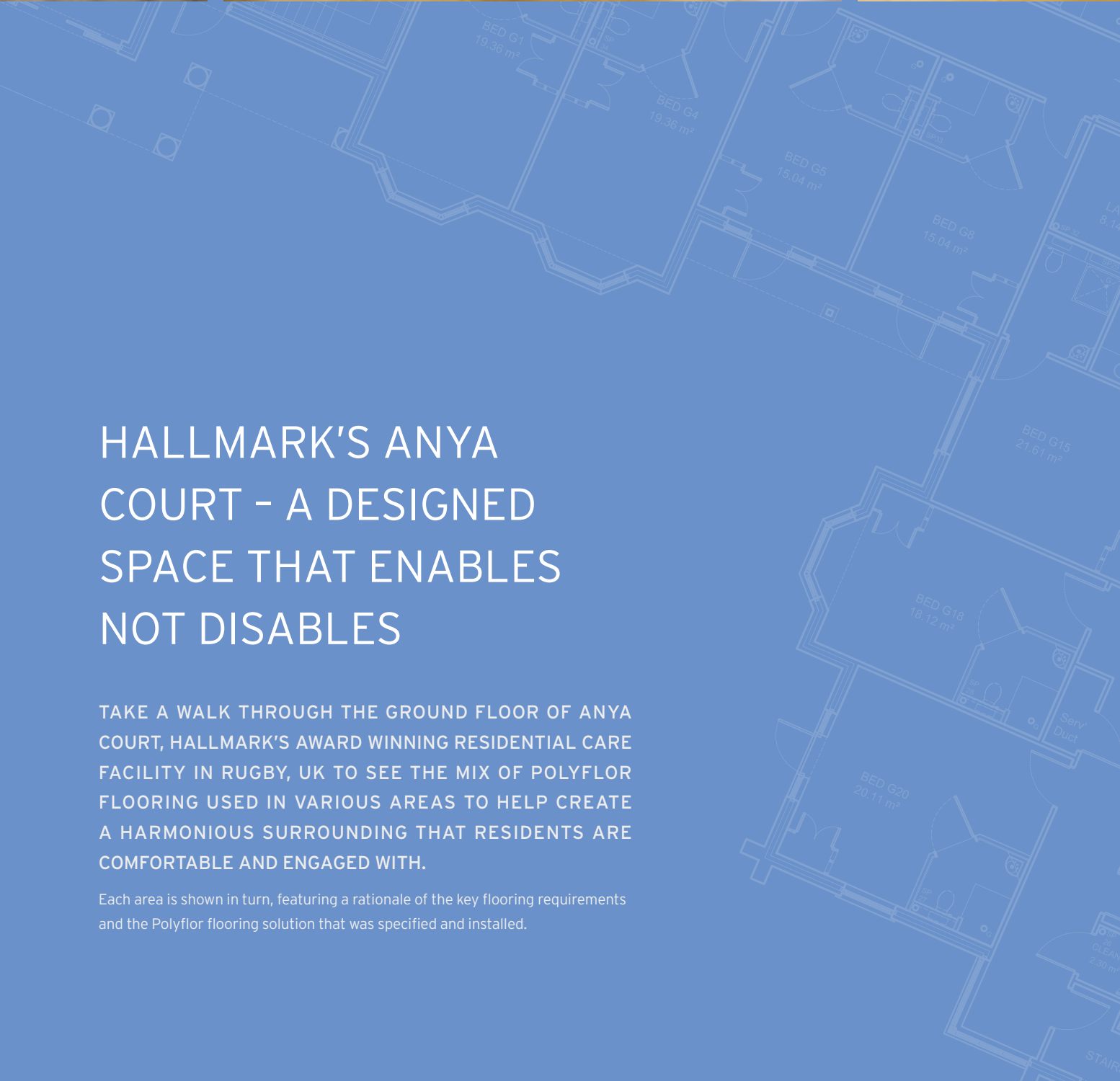




HALLMARK'S ANYA COURT - A DESIGNED SPACE THAT ENABLES NOT DISABLES

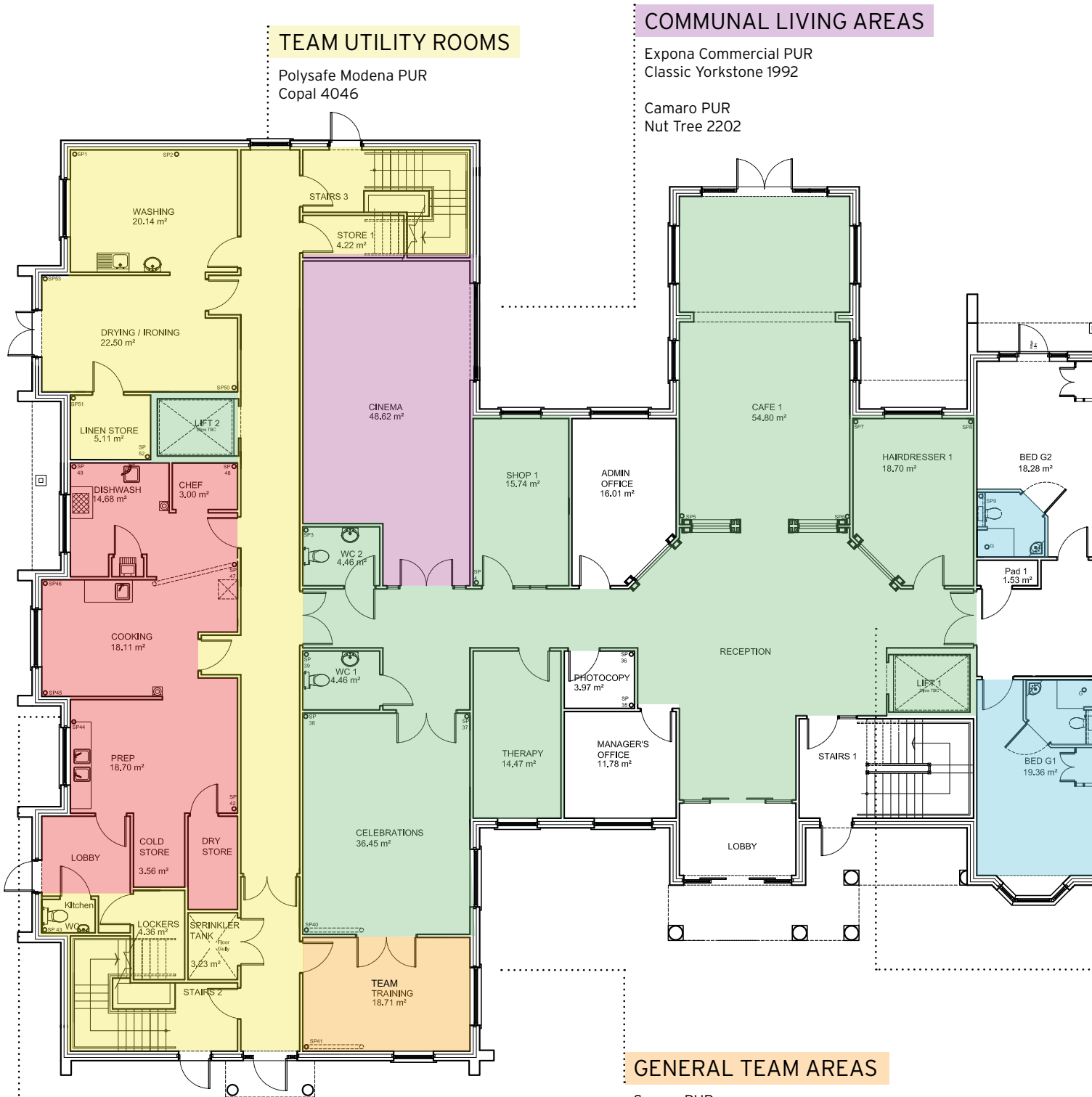
TAKE A WALK THROUGH THE GROUND FLOOR OF ANYA COURT, HALLMARK'S AWARD WINNING RESIDENTIAL CARE FACILITY IN RUGBY, UK TO SEE THE MIX OF POLYFLOR FLOORING USED IN VARIOUS AREAS TO HELP CREATE A HARMONIOUS SURROUNDING THAT RESIDENTS ARE COMFORTABLE AND ENGAGED WITH.

Each area is shown in turn, featuring a rationale of the key flooring requirements and the Polyflor flooring solution that was specified and installed.



DEMENTIA-FRIENDLY FLOORING ANYA COURT GROUND FLOOR PLAN

Polyflor flooring solutions for Anya Court, an award winning Hallmark Care Home, offering nursing, residential and dementia care.



SPECIALIST TEAM AREAS

Polysafe Ultima
Iron Ore 4340

Polysafe Ultima
Mortar 4360

COMMUNAL LIVING AREAS

Expona Commercial PUR
Classic Yorkstone 1992

Camaro PUR
Nut Tree 2202

GENERAL TEAM AREAS

Secura PUR
Antique Herringbone 2129

Pearlazzo PUR
Dark Berry 9725

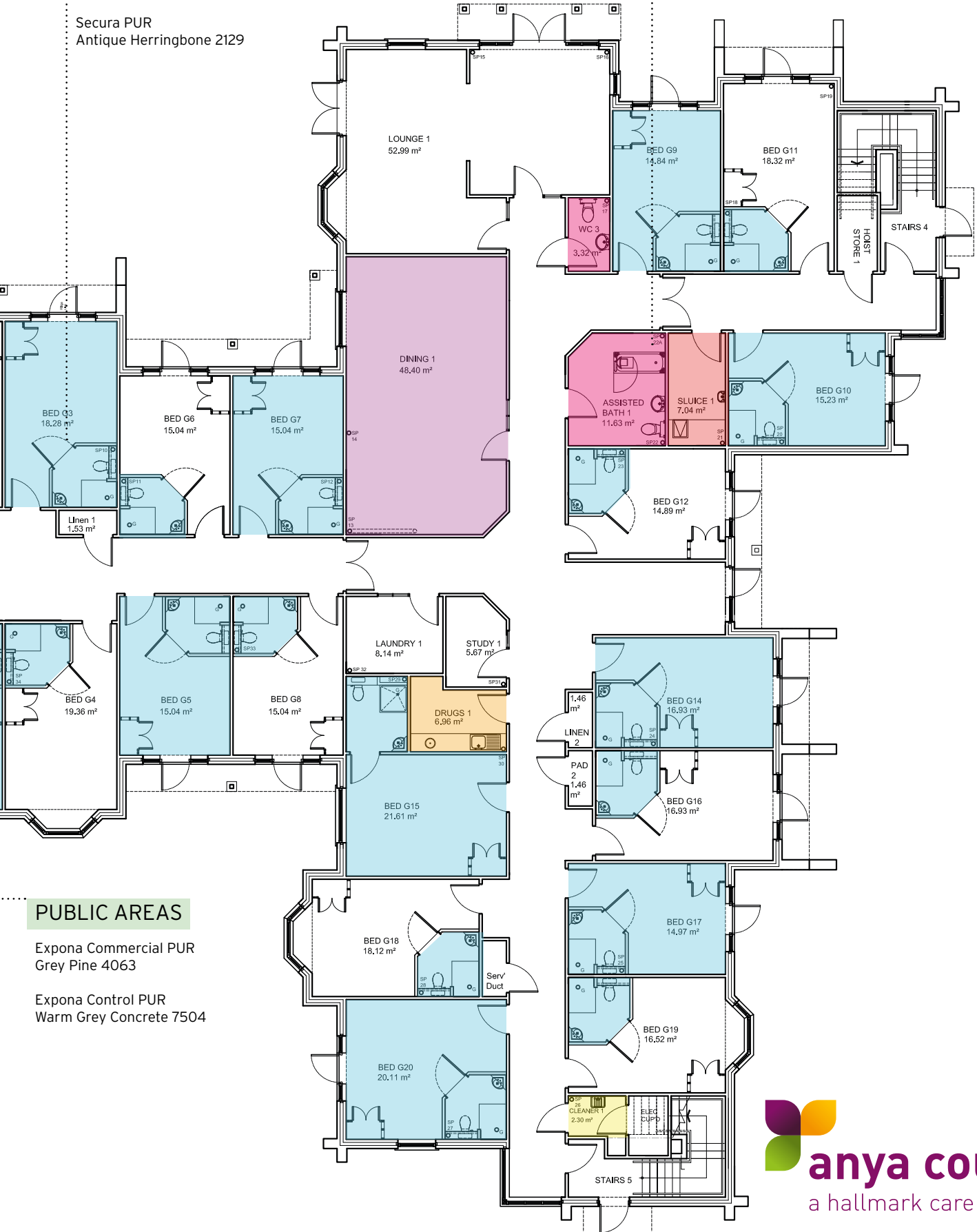
ASSISTED LIVING AREAS

Expona Control PUR
Classic Yorkstone 7502

BEDROOMS & EN SUITE SHOWERS

Polysafe Hydro Evolve
Danube 4254

Secura PUR
Antique Herringbone 2129



PUBLIC AREAS

Expona Commercial PUR
Grey Pine 4063

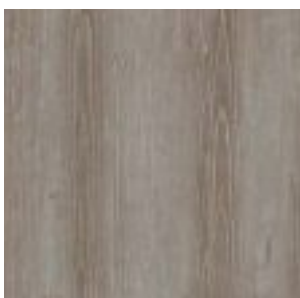
Expona Control PUR
Warm Grey Concrete 7504

PUBLIC AREAS



EXPONA®

COMMERCIAL



LVT PLANK

Expona Commercial PUR
Grey Pine 4063



EXPONA®

CONTROL



LVT TILE

Expona Control PUR
Warm Grey Concrete 7504



USE AREAS:

RECEPTION, CAFÉ, THERAPY ROOM, HAIRDRESSER, THERAPY ROOM, SHOP, LIFTS

KEY FLOORING REQUIREMENTS:

- ✓ For the areas to use one continuous flooring surface with tonal contrast against walls
- ✓ To use a richer hue to add depth to the area with a matter finish and no secondary flecks
- ✓ Creation of a homely and inviting feel, replicating natural materials with an attractive and subtle wood grain feature
- ✓ High durability to accommodate heavy visitor, staff and resident traffic
- ✓ PUR maintenance enhancement for ease of cleaning

A SELECTION OF POLYFLOR RANGES THAT MAY ALSO BE SUITABLE:

Expona Design PUR, Expona Control PUR, Polysafe Wood fx PUR, Polysafe Arena PUR, Forest fx PUR, Expona Flow PUR, Acoustix Forest fx PUR, Affinity 2⁵⁵

USE AREAS:

VISITOR & RESIDENT WCS

KEY FLOORING REQUIREMENTS:

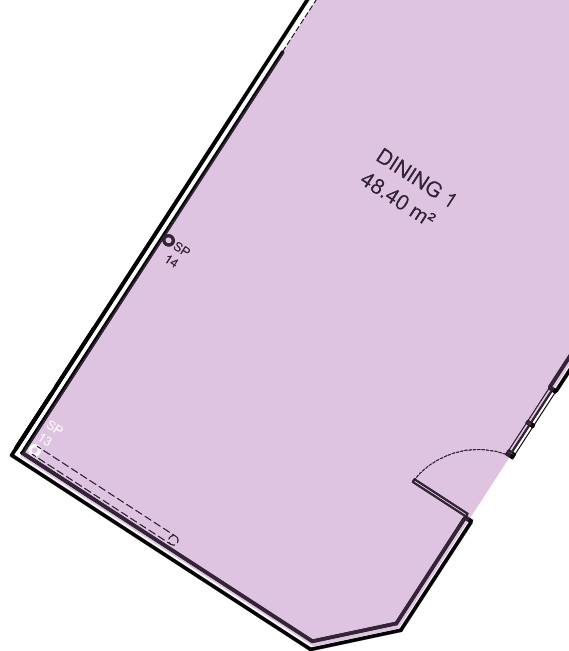
- ✓ To incorporate virtually invisible particles to provide slip resistance in wet conditions
- ✓ To replicate natural materials and ensure the area is not institutional and clinical, retaining the homely feel expressed throughout the facility
- ✓ To be dementia-friendly in terms of finish, decoration and depth of colour
- ✓ Particles through performance layer for sustainable slip resistant performance & full HSE Compliance
- ✓ PUR maintenance enhancement for ease of cleaning

A SELECTION OF POLYFLOR RANGES THAT MAY ALSO BE SUITABLE:

Polysafe Arena PUR, Polysafe Modena PUR, Polysafe Wood fx PUR



COMMUNAL LIVING AREAS



CAMARO™ FLOORING COLLECTION

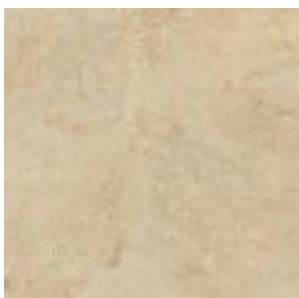


LVT PLANK

Camaro PUR
Nut Tree 2202



EXPONA® COMMERCIAL



LVT TILE

Expona Commercial PUR
Classic Yorkstone 1992



USE AREAS:

DINING ROOM

KEY FLOORING REQUIREMENTS:

- ✓ The need to represent a home from home setting, using a product typically used in a domestic dining room environment
- ✓ To use a rich hue that replicates natural materials, adding depth and an inviting feel to the area
- ✓ To feature a non-intrusive matt finish
- ✓ PUR maintenance enhancement for ease of cleaning

A SELECTION OF POLYFLOR RANGES THAT MAY ALSO BE SUITABLE:

Expona Design PUR, Expona Flow PUR, Acoustix Forest fx PUR, Expona Control PUR, Polysafe Wood fx Acoustix PUR, Affinity 2⁵⁵

USE AREAS:

CINEMA

KEY FLOORING REQUIREMENTS:

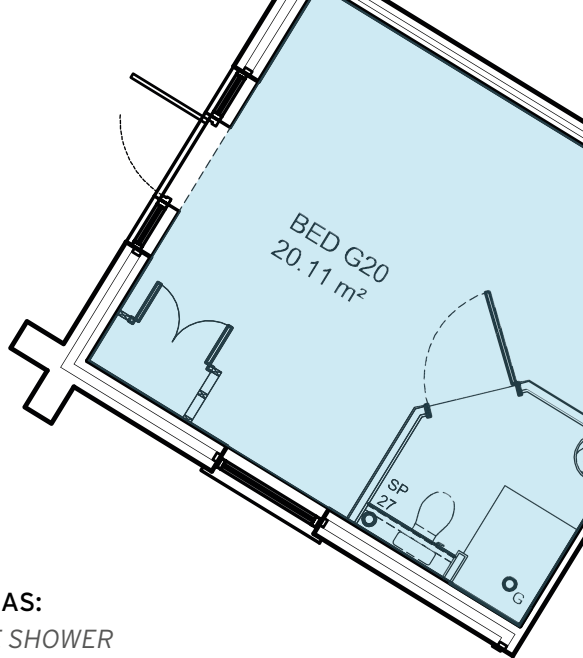
- ✓ To feature a matt finish and no highly contrasting secondary flecks to avoid residents being distracted
- ✓ The need to create a luxurious and stylish feel, replicating natural materials with a realistic and nuanced stone effect
- ✓ High durability to accommodate communal traffic
- ✓ PUR maintenance enhancement for ease of cleaning

A SELECTION OF POLYFLOR RANGES THAT MAY ALSO BE SUITABLE:

Expona Design PUR, Expona Flow PUR, Acoustix Forest fx PUR, Affinity 2⁵⁵



BEDROOMS & EN SUITE SHOWERS



Polysafe™ hydro|evolve

a clear step forward



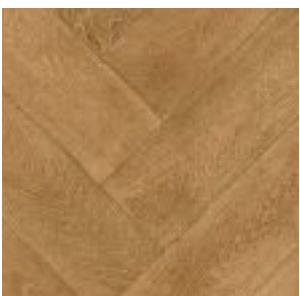
SAFETY SHEET

Polysafe Hydro Evolve
Danube 4254



Secura

luxury vinyl sheet flooring



LUXURY VINYL SHEET

Secura PUR
Antique Herringbone 2129



USE AREAS:

EN-SUITE SHOWER

KEY FLOORING REQUIREMENTS:

- ✓ To feature particles to generate traction and underfoot safety in continually wet conditions
- ✓ Accommodate users with bare feet and shod footwear
- ✓ Feature a profiled emboss to highlight the transition from bedroom to en-suite for the resident & aid the visually impaired
- ✓ Particles through performance layer for sustainable slip resistant performance & full HSE Compliance
- ✓ To be a flexible sheet product that can be welded at the seams for an impervious finish & covered up the wall to prevent water ingress

USE AREAS:

BEDROOM

KEY FLOORING REQUIREMENTS:

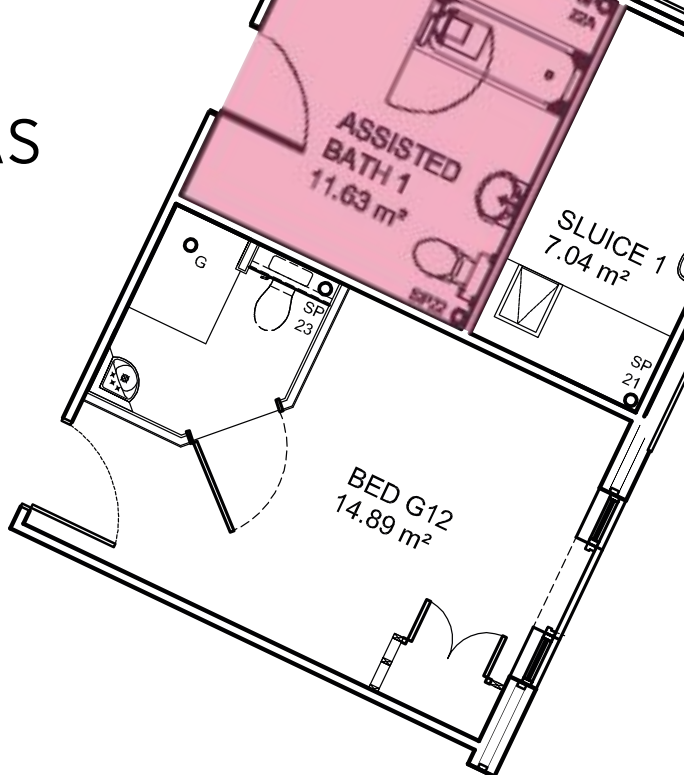
- ✓ To match the tone and colour of flooring in the corridors and thus avoid any contrast or trip hazard to residents
- ✓ Ensure comfort and softness underfoot whilst offering an acoustic solution to reduce impact noise levels for residents
- ✓ Provide a floor that closely resembles what residents were most likely to have at home, creating a warm and welcoming feel
- ✓ To create a classical looking floor design that promotes a positive and ambient environment
- ✓ PUR maintenance enhancement for ease of cleaning

A SELECTION OF POLYFLOR RANGES THAT MAY ALSO BE SUITABLE FOR BEDROOMS:

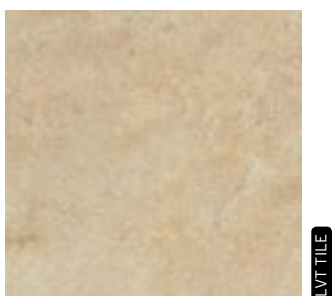
Acoustix Forest fx PUR, Acoustix Gallery fx PUR, Polysafe Wood fx PUR, Polysafe Arena PUR, Designatex PUR



ASSISTED LIVING AREAS



EXPONA[®] CONTROL



Expona Control PUR
Classic Yorkstone 7502



USE AREAS:

ASSISTED BATH & WC

KEY FLOORING REQUIREMENTS:

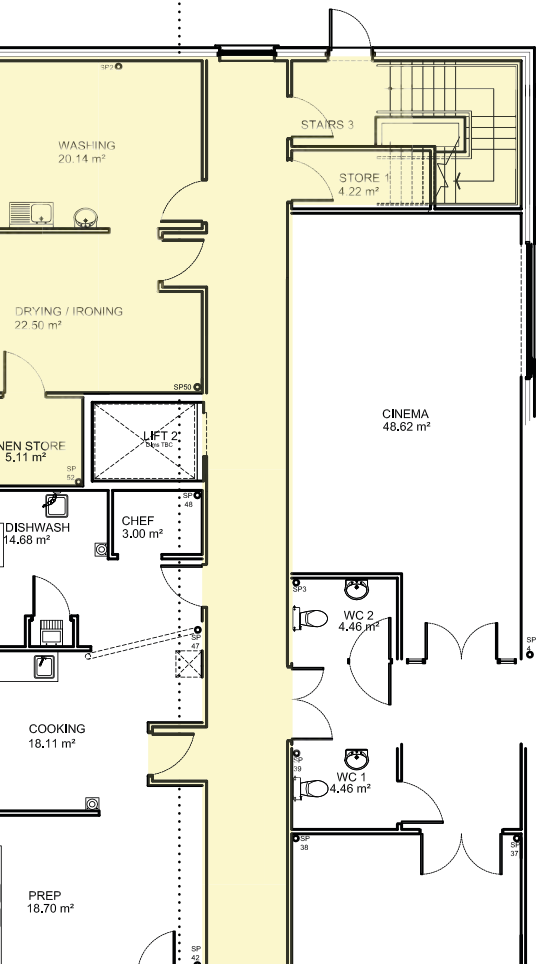
- ✓ To incorporate virtually invisible particles to provide slip resistance in wet conditions
- ✓ To replicate natural materials and ensure the area is not institutional and clinical, retaining the homely feel expressed throughout
- ✓ To be dementia-friendly in terms of finish and decoration
- ✓ Particles through wear layer for sustainable slip resistant performance & full HSE Compliance
- ✓ PUR maintenance enhancement for ease of cleaning

A SELECTION OF POLYFLOR RANGES THAT MAY ALSO BE SUITABLE:

Polysafe Arena PUR, Polysafe Modena PUR,
Polysafe Wood fx PUR



TEAM UTILITY ROOMS



Polysafe™ Modena
Supreme design with safety assured



SAFETY SHEET

Polysafe Modena PUR
Copal 4046

USE AREAS:

WASHING, DRYING/IRONING, LINEN STORE,
CLEANER ROOM & LOCKERS/WC

KEY FLOORING REQUIREMENTS:

- ✓ To incorporate virtually invisible particles to provide slip resistance in utility areas with risk of water spillage and contamination
- ✓ A need to offer an understated yet stylish design that promotes a positive working environment for staff
- ✓ To be slip resistant for the guaranteed life of the product, offering low slip potential with full HSE Compliance
- ✓ Particles to be through performance layer for sustained performance
- ✓ PUR maintenance enhancement for ease of cleaning

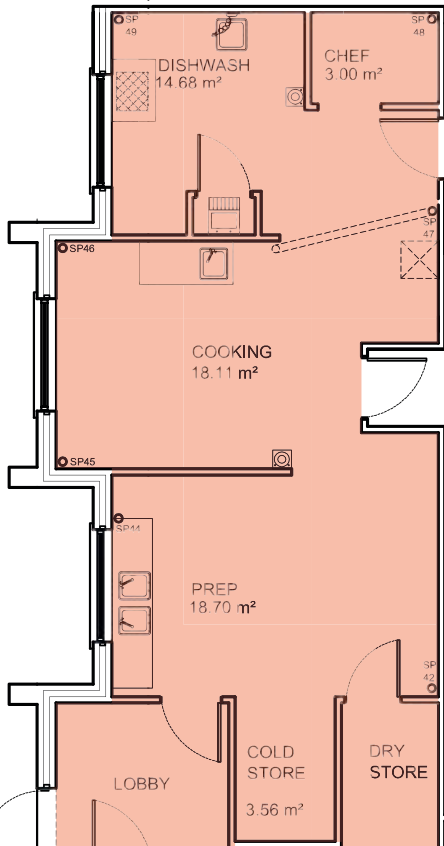
A SELECTION OF POLYFLOR RANGES THAT MAY ALSO BE SUITABLE:

Polysafe Verona PUR, Polysafe Wood fx PUR, Polysafe Arena PUR, Polysafe Mosaic PUR, Polysafe Standard PUR





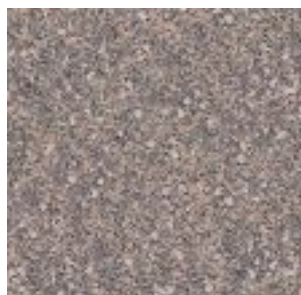
SPECIALIST TEAM AREAS



Polysafe™ Ultima



Polysafe Ultima
Iron Ore 4340



Polysafe Ultima
Mortar 4360

SAFETY SHEET

SAFETY SHEET

USE AREAS:

KITCHEN AREAS - COOKING, PREP, COLD & DRY STORE, DISHWASH & CHEF AREAS, SLUICE ROOM

KEY FLOORING REQUIREMENTS

- ✓ To provide enhanced slip resistance to staff in cooking areas where there are regular spillages of oil and grease
- ✓ To be slip resistant for the guaranteed life of the product, offering low slip potential with full HSE Compliance
- ✓ Enhanced concentration of particles within product required to ensure sufficient surface roughness and Pendulum Wet Test result, providing traction in light of spillages
- ✓ High durability product needed for continued performance - function over form

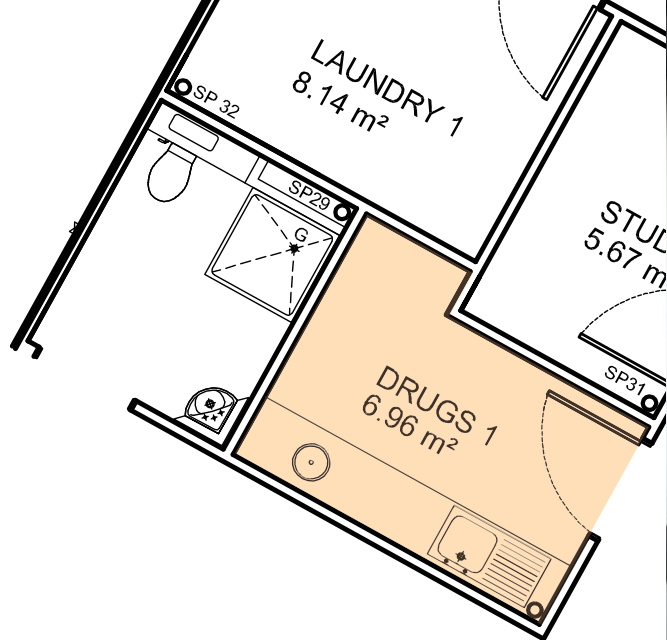
POLYFLOR RANGE THAT MAY ALSO BE SUITABLE:

Polysafe Apex

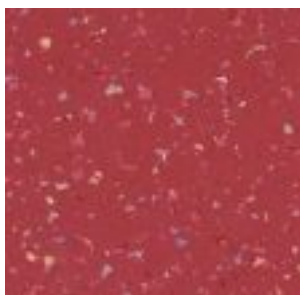




GENERAL TEAM AREAS



Pearlazzo PUR



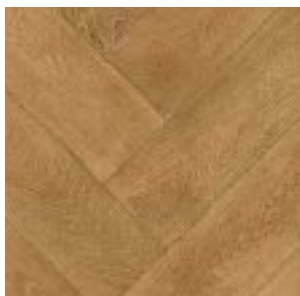
HOMOGENEOUS SHEET

Pearlazzo PUR
Dark Berry 9725



Secura

luxury vinyl sheet flooring



LUXURY VINYL SHEET

Secura
Antique Herringbone 2129



USE AREAS:

DRUGS ROOM

KEY FLOORING REQUIREMENTS:

- ✓ Room to be used by staff only so flooring needs to provide visual barrier for residents
- ✓ Busy decoration with pearlescent and contrasting coloured chips
- ✓ Deep colour required on floor to offset contrast used on wall surface to create more clinical feel that is representative for type of use area
- ✓ PUR maintenance enhancement for ease of cleaning

A SELECTION OF POLYFLOR RANGES THAT MAY ALSO BE SUITABLE:

Prestige PUR, Mystique PUR, Classic Mystique PUR, Polysafe Verona PUR, Polysafe Mosaic PUR

USE AREAS:

TEAM TRAINING ROOM

KEY FLOORING REQUIREMENTS:

- ✓ For the flooring to contribute to an inviting feel that is conducive to learning
- ✓ Ensure comfort and softness underfoot for team members whilst offering an acoustic solution to reduce impact noise levels
- ✓ Provide a floor that closely resembles flooring that staff may have at home, creating a relaxed ambience
- ✓ PUR maintenance enhancement for ease of cleaning

A SELECTION OF POLYFLOR RANGES THAT MAY ALSO BE SUITABLE:

Acoustix Forest fx PUR, Acoustix Gallery fx PUR, Polysafe Wood fx Acoustix PUR, Polysafe Wood fx PUR, Polysafe Arena PUR, Designatex PUR



CWMGELLI LODGE

1700m² of Polyflor flooring has been used to create a stimulating and vibrant space at a brand new dementia care facility at Cwmgelli Lodge in Blackwood, Wales, designed to positively meet the needs of younger people with dementia or cognitive impairment.

The realistic light wood tones represented in the American Oak 3380 shade within Polyflor's Forest fx PUR sheet vinyl collection were installed across communal areas, circulation spaces, café and dining areas as well as within bedrooms to create a fresh, spacious and homely experience for residents. Polysafe flooring was also used across en-suite bathrooms to provide a safe yet attractive feel.


Increasing the existing provision for younger people living with dementia, Cwmgelli Lodge provides longer term accommodation for residents and family visitors within a rural backdrop, featuring 24 self-contained units split over two floors. Operating as a collaboration of building and care services between the Seren Group and Grwp Gwalia, Cwmgelli Lodge was developed following consultation with Aneurin Bevan University Health Board (ABUHB) and The Alzheimer's

Society Younger Persons Review Panel, who highlighted the need for a regional centre specifically for younger people who are diagnosed with the condition at an earlier stage of life. The flooring used in the facility needed to provide a refreshing and non-institutional feel that would contribute to reduced anxiety levels for these younger residents. Forest fx's delicate nuances in wood styling was found to highly complement the colour schemes in bedroom and lounge areas and was selected by a Review Panel consisting of younger people with dementia.

Every part of the building space has been designed with its users in mind, meeting the need of the younger community who require an alternative care model to the traditional setting offered by an older person's residential care home

Designed by the Seren Group, Cwmgelli Lodge was built in consultation with Andrew Wilson Partnership, ABUHB and the Alzheimer's Society Review Panel. Every part of the building space has been designed with its users in mind, meeting the need of the younger community who require an alternative care model to the traditional setting offered by an older person's residential care home. To inform the design of Cwmgelli, members of the Seren Group and ABUHB attended an RNIB Cymru training course on sight loss awareness and designing homes for people with dementia.





"The flooring chosen from Polyflor makes a real contribution to the overall space, helping create an airy feel that promotes relaxation and encourages residents to live as independently as possible"

- Stephen Traves, Project Manager at the Seren Group







Stephen Traves, Project Manager at the Seren Group added:

“With dementia rates across Wales predicted to increase by 31% and by as much as 44% in some rural areas, coupled with increased levels of younger people now receiving a diagnosis, there was a clear need for Cwmgelli to provide a welcoming and modern interior that was a world away from the clinical care environment. The flooring chosen from Polyflor makes a real contribution to the overall space, helping create an airy feel that promotes relaxation and encourages residents to live as independently as possible.”



CWMGELLI
LODGE

BELONG WARRINGTON CARE VILLAGE

Polyflor products have been used to create a modern and welcoming bistro area within a dementia-friendly space at the Belong Warrington care village in Cheshire.

The £9.5 million state-of-the-art Belong Warrington care village, designed by Pozzoni Architecture Ltd, is a community facility, including village centre amenities, households for residents who require 24 hour dementia and nursing care, along with independent living apartments. Since opening, the facility has been visited by care home owners and designers from all over Europe as an example of excellent care home design. The bistro on the ground floor is open to both residents and the public, providing a family friendly environment serving food, drink and snacks.

Wood effect Expona Design PUR luxury vinyl tiles in the Light Elm 6182 shade were installed in the bistro, reception area, corridors and also in the village exercise studio. This grey toned wood effect design features nuanced grain detail and a lightly textured surface emboss for added realism and

warmth. Natural material effects like this are continually popular flooring choices for care environments as they are familiar and help create a homely rather than clinical look. This same flooring design was used throughout the ground floor to aid residents navigating around the building and ensure they perceive the flooring as a continuous surface and avoid disorientation.

Since opening, the facility has been visited by care home owners and designers from all over Europe as an example of excellent care home design.





“The natural look of the flooring is familiar to our residents living with dementia, so it helps to project a relaxing and calming environment, contributing to reduced anxiety levels”

- David Pointon, Business Support Manager at CLS Care Services



David Pointon, Business Support Manager at CLS Care Services commented:

“We’re delighted with the finished look of our bistro. With the installation of this beautiful flooring we’ve been able to create a place where our residents will enjoy spending quality time with their family and friends. The natural look of the flooring is familiar to our residents living with dementia, so it helps to project a relaxing and calming environment, contributing to reduced anxiety levels.”

WINCHCOMBE PLACE

Natural looking wood effect safety flooring was used to help create a beautiful dementia-friendly interior at Winchcombe Place in Newbury, Berkshire. Offering a mix of residential, dementia and nursing care, this state of the art 80 bedroom care home was designed by The Drawing Room Interiors of Solihull, with specialist furniture and vintage displays to aid reminiscence, supplied and fitted by YTM Furniture of Pontefract. The resulting design led to the project team at The Drawing Room Interiors and YTM Furniture being awarded a prestigious 2014 SBID International Design Award for New Build and Development.

Polysafe Wood fx PUR safety vinyl flooring in the European Oak 3347 shade was installed in the reception area, dining room and hair salon of the care home to help create a relaxed and comfortable environment to residents and those living with dementia. Featuring a more matt look and an authentic, consistent reproduction of wood, the flooring contributes to the overall welcoming feel offered to residents. This homely appearance helped to create a stylish environment that complements the use of historical artefacts on display. These

vintage items were designed to reflect the local history of the site and community as well as offering visual cues to aid reminiscence for dementia residents.

Polysafe Wood fx PUR safety vinyl flooring in the European Oak 3347 shade was installed in the reception area, dining room and hair salon of the care home to help create a relaxed and comfortable environment to residents and those living with dementia.



"The realistic wood tones offered by Polysafe Wood fx provides an attractive flooring option with built-in slip resistance to help dementia residents feel at ease and provide safety underfoot."

Diana Ceella, Director of The Drawing Room Interiors







Diana Celella, Director of The Drawing Room Interiors commented:

“At the outset, a key consideration was for the interior to be suitable for those residents living with dementia, offering integrated, inspirational yet calming surroundings that would be supportive to their care. The realistic wood tones offered by Polysafe Wood fx provides an attractive flooring option with built-in slip resistance to help dementia residents feel at ease and provide safety underfoot. Teamed with appropriate lighting and easy wayfinding, the overall environment is anything but clinical.”



MANOR HOSPITAL

Safety flooring has been installed throughout Ward 29 at Manor Hospital in Walsall, West Midlands, a new £2.5 million new dementia-friendly facility.

Stockport based construction and engineering company MTX Contracts Ltd were asked to design, manufacture and construct Ward 29, a 1491m² modular construction made up of 31 modules which were built and fitted out off site before being lifted into position at the hospital by a 350 tonne crane. Polyflor flooring was used throughout the Hospital's new 30 bed dementia-friendly facility which includes a reception area, consulting rooms, patient sitting room, six single bedrooms and six four bedrooms with en-suite bathrooms.


The natural looking tone of Polysafe Wood fx PUR's American Oak 3387 shade was used throughout the ward's bedrooms, reception area and corridors; with traditional Polysafe products used in en-suite bathrooms to help keep patients, staff and visitors safe and reduce the risk of slips and falls. As well as a clean design to create a homely look, Polysafe Wood fx features virtually invisible safety particles for increased traction underfoot, providing sustainable wet slip resistance

throughout the guaranteed life of the product. The product is also enhanced with a Polysafe PUR reinforcement to facilitate ease of maintenance.

Polysafe Wood fx PUR's American Oak 3387 shade was used throughout the ward areas to help keep patients, staff and visitors safe and reduce the risk of slips and falls.

The interior of Ward 29 was designed with the needs of patients living with different forms of dementia in mind, with patient areas colour co-ordinated to aid orientation and wayfinding.





“Polyflor’s safety flooring is the ideal combination of high design and high performance. This has allowed us to create a safe healthcare facility for Manor Hospital that is less clinical and more welcoming, creating a more positive environment for dementia patients and staff alike.”

-Steven Hartley, Associate Director at MTX Contracts Ltd









PRINCE PHILIP HOSPITAL

Polyflor's Forest fx PUR wood effect sheet vinyl floorcovering featured extensively in Hywel Dda Health Board's new Mynydd Mawr Rehabilitation Unit at Prince Philip Hospital, in Llanelli, Wales. The single storey extension marked an investment of £870,000 by the Health Board to refurbish and refresh the space and make it more dementia-friendly. Over 500m² of Polyflor products were used in the development including Forest fx PUR to bedroom and circulation areas, Polysafe Hydro to en-suite bathrooms and Polysafe Modena PUR to utility rooms. Patients on the Rehabilitation Unit are cared for by a multidisciplinary team who work closely together to enable them to regain the best possible level of health and independence, resulting in them being safely discharged to the most appropriate environment. It was therefore essential that the new specialised care unit provided a safe and pleasant environment that promotes wellbeing.

Classic Oak 3100 from Forest fx PUR was selected for the core living areas of the facility after much consideration and analysis using the King's Fund Environmental Assessment Tool. In order to create a comfortable and improved care

environment for people admitted to the hospital who also have dementia and to future proof for the anticipated growth in diagnosis of the condition, the assessment tool was used to provide a refreshed approach and support the implementation of the National Dementia Strategy. The natural look of the Forest fx PUR design helped to contribute to the airy space and promote wellbeing.

The single storey extension marked an investment of £870,000 by the Health Board to refurbish and refresh the space and make it more dementia-friendly





"The appearance of the floor has a significant effect on the feel of the environment and the usability of the area. With Forest fx we have a product that is durable, homely and highly suitable for our specialist facility"

-Julian Wheeler-Jones, Capital Projects Manager at Hywel Dda University Health Board



CROYDON UNIVERSITY HOSPITAL

Mid-tone American Oak 3380 from Polyflor's Forest fx PUR range has helped Croydon Health Services NHS Trust to create a welcoming dementia-friendly care zone in two reconfigured wards at Croydon University Hospital.

Designed by IBI Group, the refurbishment involved creating a new environment specifically suited to patients who are admitted to hospital and living with dementia. Incorporating safe wander loops with integrated seating, the flooring was chosen to contrast appropriately with furniture and wall surfaces, creating a refreshed look that could contribute to less stress for patients on the ward.

Installed within a new dementia hub and café, which replaced the original nurse station and is designed to encourage more direct engagement with patients, the subtlety and high clarity replication of timber in the flooring design helped to create a relaxed ambience that promotes this more open dialogue between carer and patients.

Also featured within ward and circulation areas, activity zones, a quiet room and a sensory zone, the chosen flooring replaced a vinyl that was not suitable for those with dementia having featured dark patches, a shiny surface and low lighting. All flooring was welded at the seams with no transition strips to avoid the issue of anxious patients who are deterred to cross thresholds.

Mid-tone American Oak 3380 from Polyflor's Forest fx PUR range has helped Croydon Health Services NHS Trust to create a welcoming dementia-friendly care zone in two reconfigured wards at Croydon University Hospital.

Jeff Moore, Project Manager at Croydon University Hospital commented:

"The flooring is a homely, easy to clean solution and the perfect complement to our bright dementia-friendly care zone. The finish of the floor is more matt and the tone of the floor is not too dark or too light, helping to avoid patients being distracted so that they become unbalanced. Some of our patients were immediately less anxious about this replacement floor, contributing to a more peaceful space that offers comfort and familiarity of home."







“Our patients were immediately less anxious about this replacement floor, contributing to a more peaceful space that offers comfort and a familiarity of home.”

-Jeff Moore, Project Manager at Croydon University Hospital



Get in Touch

There are many ways to contact Polyflor to discuss your specific flooring requirements for dementia spaces.

www.polyflor.com

The Polyflor website is the main resource hub for information updates regarding the care sector. Find out about latest projects and case studies featuring Polyflor products used in specialist care facilities. View online directly at: www.polyflor.com/healthcare



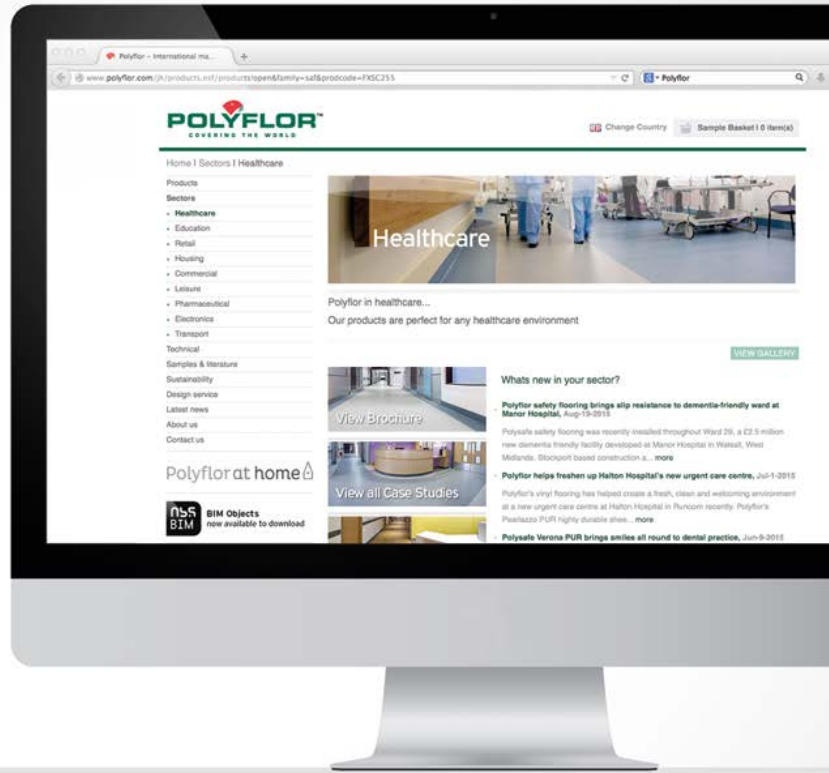
Scan for info

Product samples, shadecards and literature for Polyflor ranges are available free of charge from the Polyflor Samples Direct Hotline. Contact **+44(0)161 767 2551** for door to door delivery

Free of charge samples from

samples >>> direct

>>> **+44 (0)161 767 2551**



Direct E-mail

Contact care@polyflor.com with any questions regarding dementia-friendly flooring or to arrange for a representative to visit to discuss products in further detail

Follow Polyflor and the latest news on social networking applications:



www.twitter.com/polyflorltd



www.polyflor.com/blog



www.facebook.com/polyflorltd



[www.linkedin.com
\(search Polyflor\)](https://www.linkedin.com/search/Polyflor)

Polyflor Customer Technical Services Division

For technical advice on specifying Polyflor products for dementia environments, including aspects such as maintenance, chemical resistance and use area applications, consult the Polyflor Customer Technical Services Department on **+44(0)161 767 1912** or e-mail: tech@polyflor.com



A selection of Polyflor's products suited to dementia environments are available as Building Information Modelling (BIM) objects. These objects can be downloaded free of charge from the NBS National BIM Library for use in ongoing projects. Visit www.polyflor.com/bim or scan QR code. All Polyflor objects are available for all the major platforms and in IFC format.





POLYFLOR™ INTERNATIONAL

Australia

Polyflor Australia
Tel: +61 3 9215 4400
Tel: 1800 777 425
E-mail: sales@polyflor.com.au

Canada

Polyflor Canada Inc.
Tel: +1 905 364 3000
E-mail: sales@polyflor.ca

China

Polyflor Hong Kong
Tel: +(852) 2865 0101
E-mail: info@polyflor.com.hk

France

James Halstead France SAS
Tel: +33 (0) 8 20 20 32 11
E-mail: info@jhfrance.fr

Germany

objectflor Art und Design Belags GmbH
Tel: +49 (0) 2236 966 330
E-mail: info@objectflor.de

India

Polyflor India Pvt Ltd
Tel: +91 22 4023 2485
E-mail: info@polyflor.co.in

Ireland

Polyflor Ireland
Tel: +353 (1) 864 9304
E-mail: salesireland@polyflor.com

New Zealand

Polyflor New Zealand
Tel: +64 9 269 1111
Tel: 0800 765 935
E-mail: sales@polyflor.co.nz

Norway

Polyflor Nordic
Tel: +47 23 00 84 00
E-mail: firmapost@polyflor.no

Poland

Polflor Sp. Z o.o.
Tel: +48 (0) 61 820 3155
E-mail: polyflor@polflor.com.pl

Russia

Polyflor Contract Ltd
Tel: +7 (812) 332 42 02
E-mail: info@polyflor.ru

South Africa

Poly Sales Africa (Pty.) Ltd
Tel: +27 11 609 3500
E-mail: info@polyflor.co.za

Sweden

FalckDesign AB
Tel: +46 (0) 300 15820
E-mail: info@falckdesign.com

www.polyflor.com



POLYFLOR™ HEAD OFFICE

POLYFLOR LTD. PO BOX 3 RADCLIFFE NEW ROAD WHITEFIELD MANCHESTER M45 7NR UK

UK SALES DIRECT: +44 (0)161 767 1122	UK FAX: +44 (0)161 767 1128	RECEPTION: +44 (0)161 767 1111
UK SAMPLE REQUESTS: +44 (0)161 767 2551	EXPORT FAX: +44 (0)161 767 1166	E-MAIL: INFO@POLYFLOR.COM
EXPORT SALES DIRECT: +44 (0)161 767 1913	TECHNICAL SUPPORT: +44 (0)161 767 1912	WEBSITE: WWW.POLYFLOR.COM